

FK.221

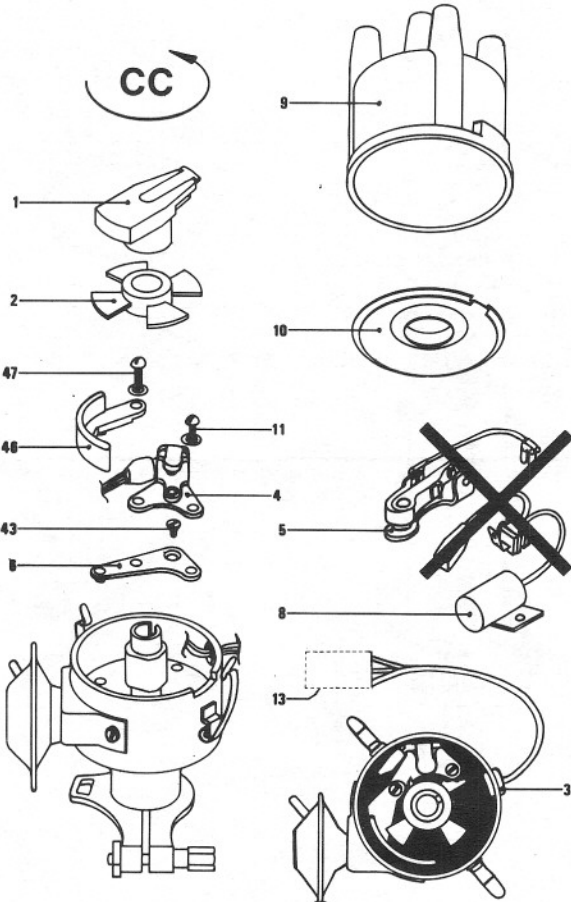
Lumenition

OPTRONIC[®] IGNITION

INFRA RED SOLID STATE BREAKERLESS IGNITION SYSTEM

90099

B



A BRITISH INVENTION

Lumenition

Division of **Autocar** Equipment Ltd
77-85 NEWINGTON CAUSEWAY
LONDON SE1 6BJ. ENGLAND

Patent Nos. 1219833, 1252324, 1252559, 1279385, 1330453,
1410782, 1417857, 1420814, 1437770.

® Registered Trade Mark.

FITTING INSTRUCTIONS

**BOSCH 4 & 6 CYLINDER DISTRIBUTORS
CLOCK & COUNTER-CLOCK WITH CLAMP FITTING
(Not for Top Bearing Type Distributors)**

- Disconnect:** Battery Negative Terminal
- Remove:** Distributor Cap (9)
Rotor (1)
Dust Cap if fitted (10)
Contact Breaker (5)
Condenser with Grommet (8)
- Check:** Vacuum and Mechanical advance operation.

INSTALLATION OF OPTICAL SWITCH (4)

Follow instructions A or B as appropriate

INSTRUCTION A. See Illustration A.

Clock and Counter-Clock Rotation Rotor with Contact Set Having RIGHT HAND PIVOT PIN AS ILLUSTRATION A.

- 1 Assemble adaptor plate (6) supplied into distributor by locating pip on the plate into large hole in the distributor base plate. Secure into position using countersunk screw (43) fitted into original contact breaker fixing hole.
- 2 Fit optical switch (4) to adaptor plate (6) using screws and washers (11) supplied.

INSTRUCTION B. See Illustration B.

Counter-Clock Rotation Rotor with Contact Set Having LEFT HAND PIVOT PIN AS ILLUSTRATION B.

- 1 Assemble adaptor plate (6) supplied, into distributor by locating pip on the plate into large hole in the distributor base plate. Secure into position using countersunk screw (43) fitted into original contact breaker fixing hole.
- 2 Fit optical switch (4) to adaptor plate (6) securing short leg first with short screw and washer (11) supplied. Place wire guide (46) over long side of optical switch, locating pip on wire guide in depression on adaptor plate (6). Secure with long screw and washer (47) supplied.

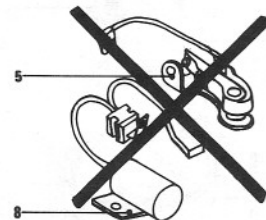
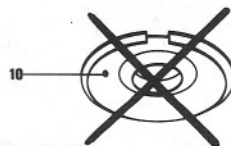
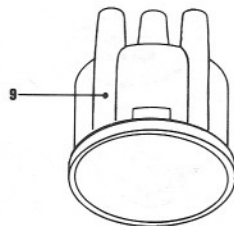
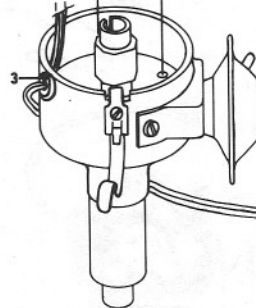
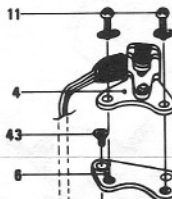
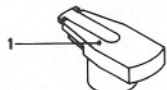
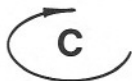
FK.221

**Bosch 4 cylinder Distributor
Clockwise Rotation**

All types, continue Instructions as follows

- 3 Select correct size grommet to fit distributor exit hole/slot.
- 4 Route the optical switch (4) wires (between distributor body and wire guide (46) if fitted) out through distributor body exit hole/slot.
- 5 Slide selected grommet (3) over optical switch (4) wires and locate into distributor body.
- DO NOT DAMAGE WIRE INSULATION**
- 6 If more than one chopper (2) is supplied select correct size that is a tight fit over distributor cam. Fit chopper ensuring it is pushed fully down; four cylinder 4 bladed chopper or 6 cylinder 6 bladed chopper.
- 7 **CHECK** there is sufficient wire length between optical switch (4) and grommet (3) to allow for vacuum movement and that wires are clear of rotating chopper blades.
- 8 For fitment of connector (13) refer to fitting instruction supplied with the power module/optical switch package.
- 9 **RECHECK** vacuum and mechanical advance operation.
- 10 Replace rotor (1) and distributor cap (9).
- 11 Reconnect battery negative terminal and check ignition timing to manufacturer's specification when complete system is fitted.

A



13